



**KELHAM  
STUDIO**

**Studio Handbook Q1 2024**

# 01 \_\_\_\_\_

## RATE CARD & STANDARD SETUP

### Hourly Rate (Minimum)

£50/hr inc VAT

### Half Day Rate (4hrs)

£200 inc VAT

### Full Day Rate (8hrs)

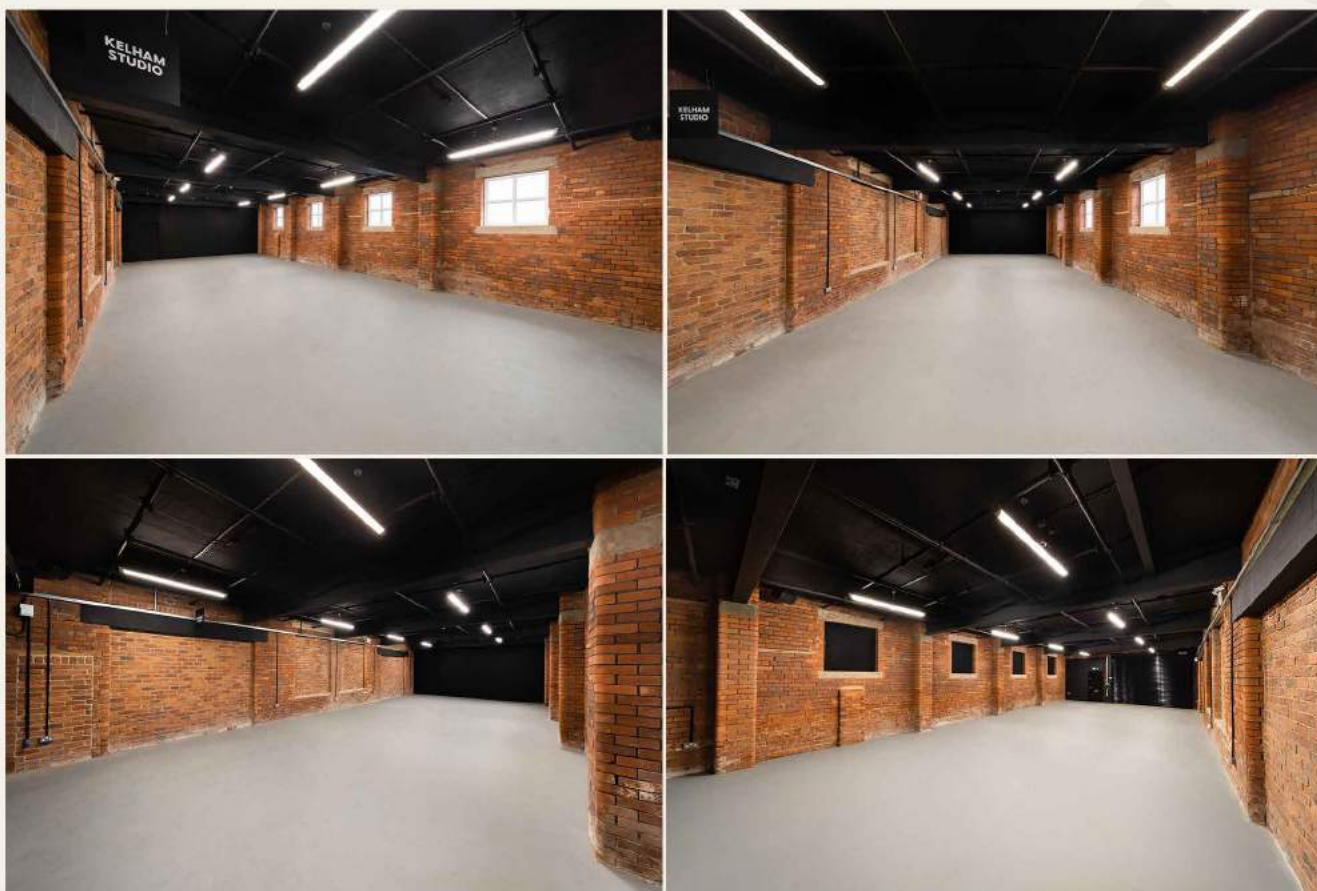
£340 inc VAT

### Planned Overtime

£50/hr inc. VAT

### Unplanned Overtime

£75/hr in VAT



The standard shooting space has a grey painted floor, matte black set wall & matte black ceiling. The set wall is designed to be painted to your own taste, so please contact us prior to your booking if you have specific requirements.

# STUDIO MEASUREMENTS



## Shooting Space

Length: 16.5m / 54.1ft

Width: 7.08m / 23.3ft

Height to RSJ: 3.0m / 9.8ft

Height to Scaffolding: 3.2m / 10.6ft

Height to Ceiling: 3.5m / 11.6ft

## Customisable Set Wall

Width: 5.0m / 16.5ft

Height: 3.5m / 11.6ft

Material: 12mm Plywood

## Secondary Spaces

Kitchen Area: 19.48m<sup>2</sup>

Hallway Area: 26.75m<sup>2</sup>

## Electric Roller Shutter

Width: 3.5m / 11.6ft

Height: 3.0m / 9.8ft

## Private Courtyard

Length: 11.4m / 37.5ft

Width: 7.08m / 23.3ft

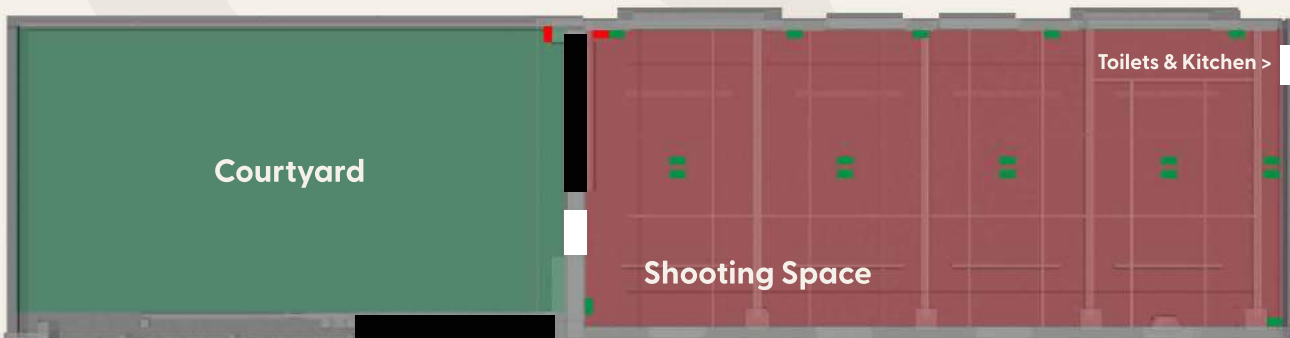
Gate Opening Width: 3.7m / 12.2ft

**Total Shooting Space: 116.82m<sup>2</sup> / 1257ft<sup>2</sup>**

**Total Secondary Spaces: 46.23m<sup>2</sup> / 497.6ft<sup>2</sup>**

**Total Courtyard Space: 80.71m<sup>2</sup> / 868.8ft<sup>2</sup>**

**Total Studio Space: 243.76m<sup>2</sup> / 2623.8ft<sup>2</sup>**



■ Dual 13A socket

■ 16A commando socket

# 03 \_\_\_\_\_

## STUDIO FACILITIES

### Private Courtyard

Ideal for parking, food catering, shooting & more. Paired with the electric roller shutter and 200kg capacity equipment trolley, loading in your equipment is simple. We recommend up to 3 parked cars.

### Power Options

There are 4 ring mains in the studio space with a variety of strategically placed 13amp sockets. The shooting space & courtyard commando sockets share a 32amp feed.

### Super Fast Internet (Up to 500Mbps)

We have a standard wifi router in the shooting space capable of 100Mbps. This can be improved to 500Mbps with hardwired ethernet.

### Blackout & Daylight

The shooting space has window frames that removes all light sources. There are 4 windows for natural light.

### Disabled Access & Toilet

We have disabled access via the courtyard and a disabled toilet.

### Flooring

The studio has grey concrete flooring throughout, this can be painted at an additional cost. We'd appreciate if you can notify the studio manager regarding any spillages or damage.

### Room Acoustics

Kelham Studio is NOT a sound stage. 4m (w) x 3m (h) black duvetyne drapes are available which can help baffle sound. They are attached via magnets to the RSJs or cabled to scaffolding.

### Set Wall

The set wall has been built with 12mm Plywood, giving you the ability to screw, paint and mount to it easily. It can be used for green screening, kitchen sets, podcast and more. Please speak to a member of the studio team if you have enquiries.

### Speaker System

The shooting space has 4 speakers in each corner linked up via bluetooth. They can be used by different devices simply by disconnecting and connecting. Please connect to: PV Series.

### Scaffolding Rig

The scaffolding system was designed with DOPs, Gaffers and Grips in mind, ensuring that lighting can be rigged overhead safely with plenty of power options. Steel Safety Cables must be used on all equipment attached to the scaffolding rig. Cables are available to use and come as standard with every booking. This is to ensure everyone's safety in the studio.

### Food & Drink

Kelham Studio offers a range of drinks and snacks. The studio manager will assist you throughout your booking.

### Equipment & Storage

Our studio is equipped with a full CCTV system covering key areas. No equipment is left on site overnight. Kelham Studio is not liable for any damage or theft of any equipment left on the premises.

### Space & Capacity

Kelham Studio can hold up to 100 people.

### Animals

Pets are allowed on request.

# STUDIO INFORMATION

## Fire Safety & Escape Routes

Familiarise yourself with the nearest exits. Look for exit signs and follow them in case of a fire. Do not block exits or obstruct pathways. Keep corridors and escape routes clear at all times. Be aware of illuminated exit signs. Head towards the nearest exit and follow the signs. Do not block or lock exit doors. Report any fire safety concerns to staff. Please use allocated fire extinguishers

### Broken kit? Report it.

If a piece of Kelham Studio equipment is damaged or you suspect it may be faulty, report it immediately to the studio manager. This is essential for the safety of all studio users.

## Risk Assessments & Accidents

Please ensure to carry out any relevant risk assessments for your project within Kelham Studio. If you have an accident in Kelham Studio, report it immediately to the studio manager.

## Shutter Use

The shutter may only be operated by the Studio Manager for loading and access. Any damage caused through misuse will be charged.

## Drugs and Smoking

Smoking & Vaping is allowed in the courtyard only. We have a strict No-Drugs Policy, sorry kids.

## Noise

We love to make a lot of noise here at Kelham Studio. However, with noisy projects we like to make our neighbours aware out of respect. Please keep excessive noise to a minimum where possible.

## Under 16s & Animals

Children under the age of 16 MUST be accompanied by an adult at all times at Kelham Studio.

## Set Wall & Floor

If you require the set wall or floor to be modified for your production, please inform us when booking. Kelham Studio has an additional charge for returning it back to its original condition. The standard wall colour is matte black and the floor is grey.

## Food Vendors

If you require external catering, please inform us when booking. There is space in the courtyard for trucks, with a 16amp commando socket should they need power.



# 05 \_\_\_\_\_

## CONTACT & ARRIVALS

**Address:**  
**Kelham Studio**  
**11b Clarence Works**  
**Leveson Street**  
**Sheffield**  
**S4 7ER**

**What3Words:**  
**///packet.golf.loses**

**Email:**  
**info@kelham.studio**

### **Arriving by Car / Van**

All parking around the studio is completely free, it gets busy in the morning from around 7:30am. If you are travelling in from the motorway in a commercial vehicle, you can avoid the ULEZ zone by not entering the inner ring road.

### **Arriving by Taxi**

We are a 7 minute taxi ride from Sheffield train station. It should cost between £4 and £6. We recommend Veezu on 0114 2393939 or UBER.

### **Arriving by Tram**

We are a 10 minute walk from the Hyde Park Tram stop on the Yellow Route service.

### **Arriving by Bike**

We have space to accomodate your bike! Please bring a lock with you.

### **Arriving by Foot**

We are a 15 minute walk from the city centre! Please search for 11b Clarence Works, Leveson St on maps.

### **Arriving by Bus**

Our nearest bus stop is Saville Street / Attercliffe, a swift 7 minute walk from the studio.  
<https://bustimes.org/stops/370023485>



# USEFUL NEARBY LOCATIONS

**Hotels:**

Crown Plaza Royal Victoria Hotel (4 Star)

**AirBNB:**

<https://www.staycay.uk/>

**Supermarket & Fuel:**

Tesco Extra & Filling Station, Saville St (6am -Midnight)

**Tram Stop:**

Nunnery Square Park and Ride  
Hyde Park

**Hair:**

Kelham Barber (Hair and Beard)  
Mill Hair Studio

**Coffee:**

Gaard (Vegan Coffee Shop)  
Cafe 313  
The Grind

**Food & Drinks**

Pina (Cocktails)  
Domo (Sardinian)  
Rudy's (Pizza)  
Frymaster Chip Shop  
Neepsend Chip Shop  
Cath's Cafe

**Equipment:**

Harrison Cameras

**Pubs:**

Gardeners Rest (Relaxed Pint)  
The Fat Cat (Beer Garden)  
Saint Mars of the Desert

**Food Hall:**

Cutlery Works (Sit Upstairs - Food Hall & Bar)  
Peddlers Market (1st Friday and Saturday of each month)  
Kommune



# 07 \_\_\_\_\_

## GOODBYES

### **Overtime**

Overtime is charged out at 1.5x the hourly rate. Further charges apply to equipment rental etc.

### **Food & Drink**

Please settle any remaining payments with the studio manager before departing. We will invoice you for any food or drink that have not been paid for. This is due within 7 days.

### **Waste Management**

We kindly request that you please take away all materials and use the bins provided for general waste. We will notify you if we find any equipment or belongings after your booking. Any excessive waste left over after your booking will be removed and may be chargeable. Please leave the studio as you found it.

### **Reviews**

We welcome feedback from all Kelham Studio customers to help us improve our services. Please feel free to write us a Google Review!

